



SWAN VALLEY  
**ADVENTURE CENTRE**  
*Creating Inspiring Experiences*

SCHOOL AND COMMUNITY GROUP  
INFORMATION

OUTDOOR ACTIVITIES - CATERING -  
ACCOMMODATION - CONFERENCE ROOMS

Nestled in the beautiful Swan Valley, the **Swan Valley Adventure Centre** has been **creating inspiring experiences** for adventurers since 2016. With a core desire to create a **safe place of growth and enjoyment** for all individuals, our team share and promote the same values: honesty, integrity and respect. A short **30 minutes drive from Perth CBD**, our unique picturesque site provides guests with a multitude of options for **outdoor adventures, school camps, corporate conferences, team building activities, nature retreats** and much more.

With the ability to customise and personalise adventure packages to suit **every age, activity level and physical ability**. Our passionate skilled instructors lead **land, air and water activities** providing countless opportunities to try exciting experiences, conquer fears and learn new skills.

Our venue can accommodate over **250 guests** in charming camp houses and our exceptional Chefs can cater to a wide variety of menu options that **suit every taste and requirement**.

We boast an amazing 89 acres of tranquil open spaces and historic buildings with one mission: create **unforgettable moments** that will be talked about for years to come.

We look forward to welcoming you!



# DESIGN YOUR OWN ADVENTURE!

Splash into the Swan River with your canoe, soar across the sky on the flying fox, rediscover your inner strength on the commando course or take the team challenge of building a floating raft.

It's your adventure, you design it! Whether you choose our air, land or water activities, you will create your group's **most memorable experience!**

At the Swan Valley Adventure Centre, you will get access to a wide range of **fun outdoor activities for all ages and abilities**, lead by our skilled instructors. All our activities incorporate units of the **Australian Curriculum**. We can design a program of activities based on your desired educational outcomes.

**LAND** - Rediscover your inner strength on our commando course, take on a team-building challenge in our escape room or learn how to survive with bushcraft.

**AIR** - Soar across the air on our flying fox, challenge yourself on our high ropes course or try your hand at any one of our many high flying activities.

**WATER** - With exclusive private access to the Swan River, we are proud to host a variety of water activities. You can also enjoy our 25m swimming pool with commanding views over the centre to cool off after an adventure day\*.



*\*Bookings required. All Prices are Inclusive of GST. Pricing applies from Monday to Saturday. Sunday Activities incur a 35% surcharge. Each Activity is 1.5 hours long. Single Activity Session Bookings incur an additional \$50 fee per group. Activity times are 9:00am - 10:30am | 10:45am - 12:15pm | 12:45pm - 2:15pm | 2:30pm - 4:30pm. Rates and Price Variations: Rates quoted are appropriate to the product at the time of quoting and these rates may change subject to supply chain variations. Please refer to our website for our Terms & Conditions.*



COMMANDO COURSE



ARCHERY



ESCAPE ROOM

## COMMANDO COURSE

From pre-primary

The ultimate stamina test! Navigate through rope swings, tunnels, balancing challenges and much more. This is a great team challenge and fantastic for burning off some energy. It is one of the most popular activities on-site.

## ARCHERY

All abilities - From year 3

Become the Robin Hood of the Swan Valley with this popular sport that hones hand-to-eye coordination. Based in our undercover archery range, participants will be taught the skills they need to hit the bullseye. Patience and active listening will be required to be successful. Our sessions follow the strict guidelines set by Archery WA.

## Team Building + Catapult

From year 5

Challenging problem-solving activities that require teamwork, leadership and communication skills. Design and build a giant catapult using common materials collected throughout the day.

## ESCAPE ROOM (Blackout Zone)

From year 2

Your plane has crash-landed here in the Swan Valley. Will your team be able to work together to be successfully rescued?

Escape the darkness by working through five chambers, gaining clues, completing challenges and making clever choices. Great for teambuilding.

## Mountain Bikes

From year 7

Through the natural bush, over Jane Brook, down the slopes, up the hills, around our beautiful Swan Valley site - take it easy, take it to the extreme with time trials or take the challenge of our skills loop.

\*Minimum charge applies



BUSHCRAFT

## BUSHCRAFT

From year 2

Engage with the environment in our wonderful area of on-site bushland. Participate in creative nature play and nature art. Learn how to build a safe fire, a secure shelter in the bush, how to cook with a campfire, find clean water and use other survivor skills. Bushcraft activities are dependent on the season.

## ICE BREAKERS (30 Minutes)

From year 2

The perfect way to start any day! Our instructors will lead your group through fun games to get things going.



TEAM BUILDING

## TEAM BUILDING

From year 2

Challenging problem-solving activities that require teamwork, leadership and communication skills. There is often more than one way to proceed, so teams need to use their initiative and quickly devise a decision-making process. Challenges are tailored to suit the needs and goals of each group.

## FRISBEE GOLF – Day

From year 2

If you can throw a Frisbee and you like golf, then you will love to play Frisbee golf. It's fun for all ages and fitness levels. No time during the day?



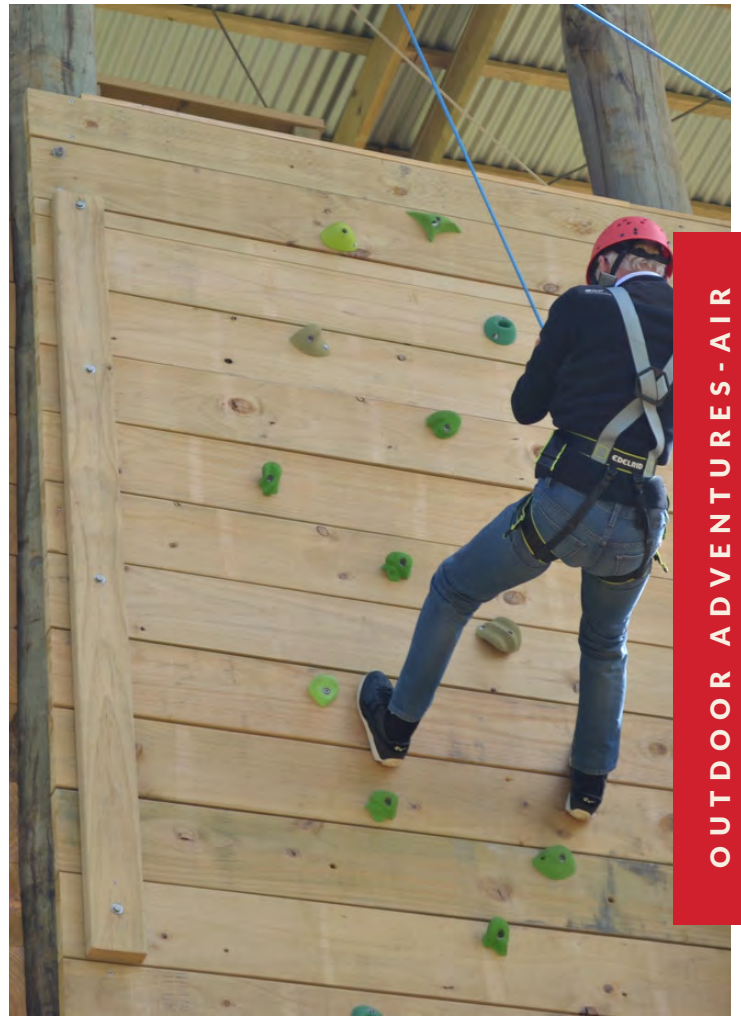
FRISBEE GOLF

## ORIENTEERING

From year 2

From treasure hunts to a full orienteering course competition, learn how to read maps like Indiana Jones! Options are available for all abilities.

\*Minimum charge applies



\*Minimum charge applies

## HIGH ROPES COURSE

From year 7

Our state-of-the-art high ropes course is set in a beautiful area of bushland over Jane Brook. A tree-top adventure to test your fears and conquer them. We use a continuous safe roller belay system for ensuring the safest possible experience.

## MID-ROPES COURSE

From year 3

A slightly lower course for the younger ones set in the same area as the high ropes. Starting from the ground each participant takes their turn to tackle up to six different challenge course obstacles while being held by a safety rope.

## JUNIOR HIGH ROPES

From pre-primary

Our junior high ropes course uses the same state-of-the-art safe roller continuous belay system as our high ropes course but with the perfect design for the little ones. It also has the added bonus of having its own 50m flying fox to finish.

## ABSEILING

From year 5

There is nothing better for gaining confidence than lowering yourself over the edge of a high tower. Conquer your fears as you learn about the equipment and techniques of this captivating sport.

## ROCK CLIMBING

From year 3

Climb to the top of our 10m high tower via the slab which is ideal for beginners. The chimney is great for improving your technique or attempt our massive 2m deep overhanging roof for a real challenge. You will discover climbing movement techniques and develop your communication skills as you put your trust in your team members that will manage to keep you safe.

## POSSUM GLIDER

All abilities - From year 2

You will glide through the air powered by the force and effort of your teammates working together to pull you up higher. Participants take it in turns to be pulled into the air!



OUTDOOR ADVENTURES - AIR

\*Minimum charge applies

### FLYING FOX

From pre-primary

Launching from our high tower, the flying fox transports you over 100m of the grounds of the Centre. Take the challenge to race a mate travelling forwards, backwards or upside down!

### CRATE STACK

From year 2

Work together to be successful! This is a very inclusive challenge where the group has multiple jobs to do including building the highest possible tower made of crates. Two participants are on top of the tower building it higher, whilst the rest of the group are supplying the crates or holding the ropes to ensure their safety.

### JACOB'S LADDER

From year 5

Another all-time classic roping challenge! Two participants take on the mighty Jacob's ladder, climbing its giant wooden rungs which get higher and further apart as they ascend. Work together to be successful while developing trust and communication skills within your team!



### LEAP OF FAITH

From year 7

One of our most challenging activities! You will climb a large telegraph pole, stand on top of it and take "the leap of faith" by jumping off to try and hit a large orange ball hanging in the air. Your group members have to keep the ropes tight as you leap off the pole. A great teambuilding activity to develop complete trust towards each other.

### Abilities Course

(Max 4 in Group) - Wheelchair

Our easy access specially designed all ability wheel chair high ropes course, uses the state of the art safe roller system. Each session is run with one instructor for four participants, ensuring high safety standards. A great way to finish with a trip down the 50m flying fox!

*Other activities that are suitable for all abilities are **Archery and Possum Glider**\**

\*Age-dependent.



\*Minimum charge applies

## CANOEING

From year 2

All aboard! Why not discover the beautiful Swan River with one of our single-bladed paddles or three person canadian canoes. The canoes are very stable and are great for novice paddlers. Participants are given a safety brief and paddle chat on technique before hitting the water. You will learn about water safety, develop skills, build relationships and play a range of games to encourage confidence on the water. Participants are encouraged to work together within their canoe and group. Expect to get wet so bring a full change of clothes and shoes.

## KAYAKING

From year 5

Each participant has their own sit-on-top kayak, with a two-blade paddle. Our kayaks are fitted with comfortable seats and high padded back rests, which are super safe and fun. If participants fall in the water they simply flip their boats back over and climb back on. As with our canoeing sessions, participants are given a full safety brief and paddle chat before hitting the water.

## RAFT BUILDING (1H30)

From year 5

Work in teams to plan, build and design a floating raft...hopefully! Learn skills to build a floating raft from different materials and take part in the major paddle challenge. About 30 to 45 minutes is spent planning and building a raft and then the rest of the time is spent on the river getting wet. Fun and laughs guaranteed!

## RIVER TRIP (3H)

From year 5

Take advantage of your time with an extended canoe or kayak trip and if you choose you can enjoy a swim along the way. This can give you the best possible experience of the Swan River.







Mountain Biking

## Mountain Bikes

From year 7

Through the natural bush, over Jane Brook, down the slopes, up the hills, around our beautiful Swan Valley site - take it easy, take it to the extreme with time trials or take the challenge of our skills loop.

## CATAPULT BUILD

From year 5

Design and build a giant catapult using common materials collected throughout the day. This best run at the end of a full day of team challenges.



Catapult Build

## TEAM BUILDING

From year 2

Challenging problem-solving activities that require teamwork, leadership and communication skills. There is often more than one way to proceed, so teams need to use their initiative and quickly devise a decision-making process. Challenges are tailored to suit the needs and goals of each group.

## KITE BUILDING

From year 5

Challenge yourself to build a kite that will fly! Hone your engineering and design skills while having fun.



Camp Fire

## FRISBEE GOLF – Day or Night

From year 2

If you can throw a Frisbee and you like golf, then you will love to play Frisbee golf. It's fun for all ages and fitness levels. No time during the day? No problem, we have LED and glow-in-the-dark Frisbees to play at night time which can be twice as fun.

## CAMP FIRE (May – Oct)

(Self Lit or Instructor Lit) – From pre-primary

Gather under the stars to chat about the day's learnings and experiences, tell stories, sing songs and roast marshmallows. A great way to start or end your adventure. Running from May to October.

## ORIENTEERING

From year 2

From treasure hunts to a full orienteering course competition, learn how to read maps and use compasses like Indiana Jones! Options are available for all abilities.

## BUSHCRAFT

From year 2

Engage with the environment in our wonderful area of on-site bushland. Participate in creative nature play and nature art. Learn how to build a safe fire, a secure shelter in the bush, how to cook with a campfire, find clean water and use other survivor skills. Bushcraft activities are dependent on the season.

## Colour Run

From year 2

On the oval and out in the sun, have a race against each other with a touch of colour with our all new colour run activity! A perfect and fun activity for everyone to be splashed with colour powder!



# ENJOY OUR WEEKLY MENU, BON APPETIT!

Enjoy the charm and style of the world-famous Swan Valley for your next event, we are sure to have a catering package that meets your needs.

We specialize in catering for all groups and events, from school camps and adventure groups to corporate clients. We offer full kitchen services from breakfast through to dinner,

Our Menu is organized within a rotation starting at the beginning of each season.

You will find our menu on our website! For those with special dietary needs, speak with one of our friendly staff members to integrate additional options into your package.

We can cater to special dietary requirements (religious or medical)



# MAKE YOURSELF AT HOME!

Created to comfortably rest adventurers' bodies and conference attendees' minds, our range of comfortable houses makes us the ideal destination for school camps, corporate conferences and group adventure holidays. Our six different houses can host up to 296 guests, providing several bedrooms, **shared bathrooms, mobility-impaired facilities** and **ensuite rooms that include their own bathroom**, suitable for supervisors or leaders.

**Linen can be provided\*** and the houses include a **safe and secure magnetic locking system**. Relaxing **social environments** have been created in each house including TVs and a small **snack-ready kitchenette** equipped with a fridge, freezer, microwave, kettle, glassware and mugs.

You can also hire our **outdoor pool** and enjoy a morning or an evening swim!

## Accommodation Options

*\*Linen Hire - Includes fitted sheet, doona, blanket (seasonal), pillow and pillowcase. (BYO Towel)*

*Bring your own linen - Includes fitted sheet. (BYO Sleeping Bag/Pillow/Towel)*



# GREVILLEA CAMP HOUSE

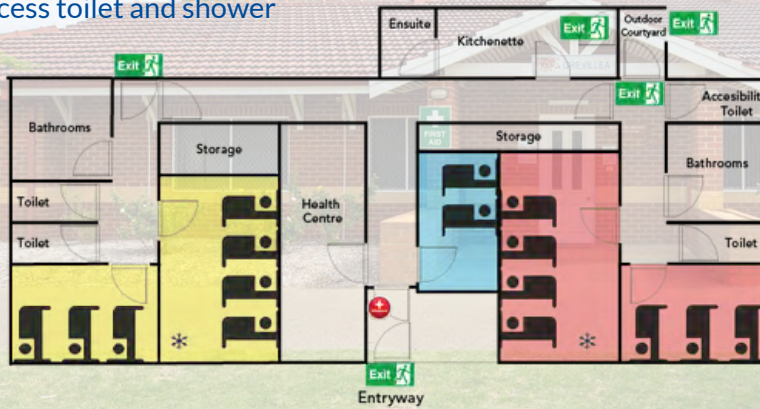
16 beds

2 bathrooms (each with 1 shower and 1 bath)

3 toilets

1 universal access toilet and shower

1 ensuite



■ East Wing x 7 Beds

■ Small Flat x 2 Beds

■ West Wing x 7

- 16
- 3
- 4
- Wheelchair Accessible
- Air Conditioning

- Exit Sign
- Fire Extinguisher or Fire Blanket
- Fire Reel
- Emergency Button
- Scale: 1cm to 1m

ACCOMMODATION

# BANKSIA CAMP HOUSE

38 beds

UPSTAIRS:

17 beds

1 bathroom

(3 showers, 3 toilets)

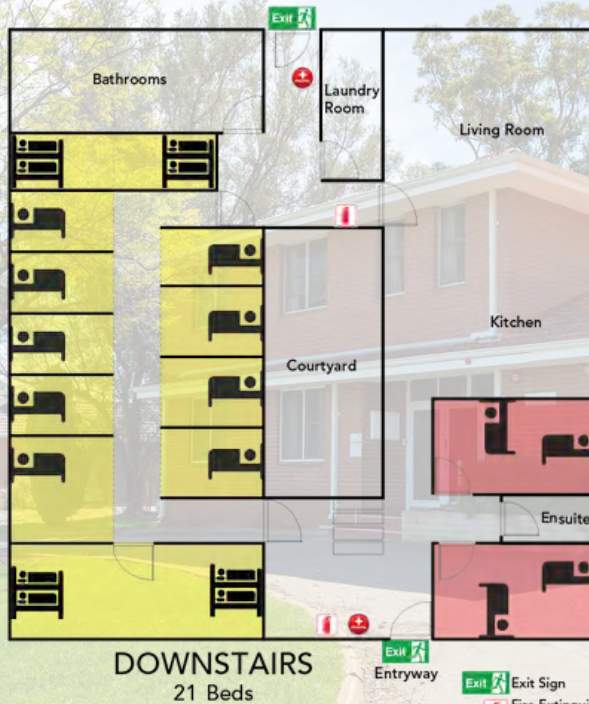
DOWNSTAIRS:

21 beds

1 bathroom

(3 showers, 3 toilets)

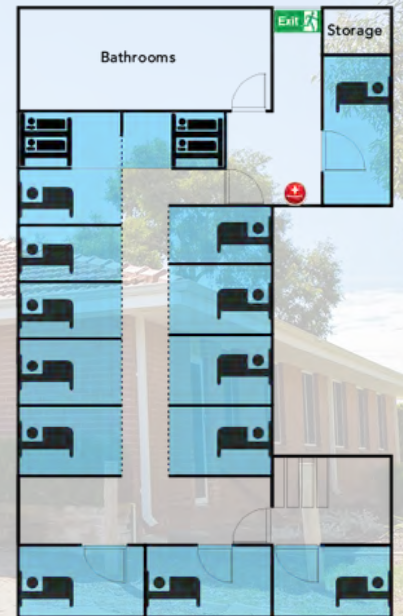
1 ensuite room



**DOWNSTAIRS**  
21 Beds

■ Downstairs Rooms x 17 Beds

■ Small Flats x 4 Beds



**UPSTAIRS**  
17 Beds

■ Upstairs Rooms x 17 Beds

- 38
- 7
- 7
- Exit Sign
- Fire Extinguisher or Fire Blanket
- Fire Reel
- Emergency Button
- Scale: 1cm to 1m



# BORONIA CAMP HOUSE

68 beds

## UPSTAIRS:

42 beds

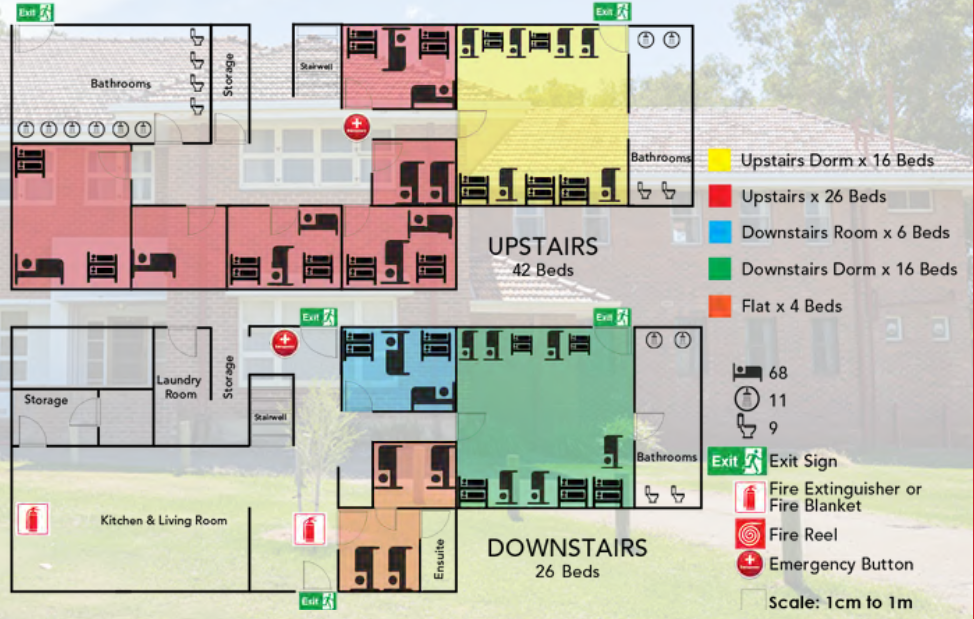
2 bathrooms

## DOWNSTAIRS:

26 beds

1 bathroom

1 ensuite room



ACCOMMODATION

# LAVENDER CAMP HOUSE

62 beds

## UPSTAIRS:

37 beds

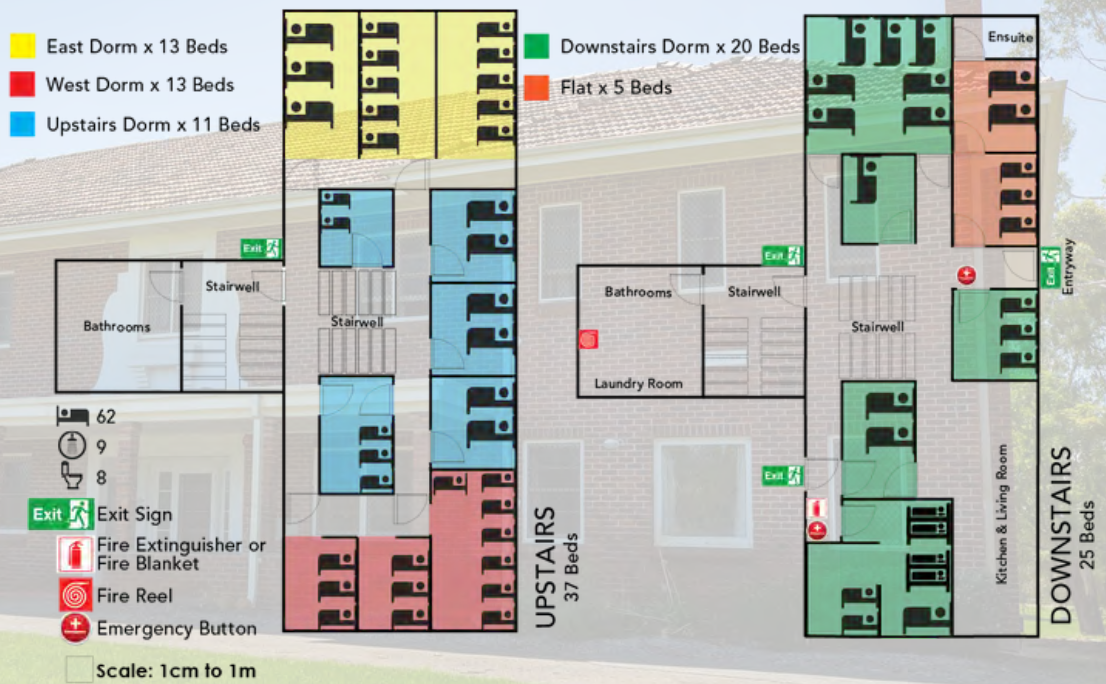
1 bathroom (5 showers, 4 toilets)

## DOWNSTAIRS:

25 beds

1 bathroom (3 showers, 3 toilets)

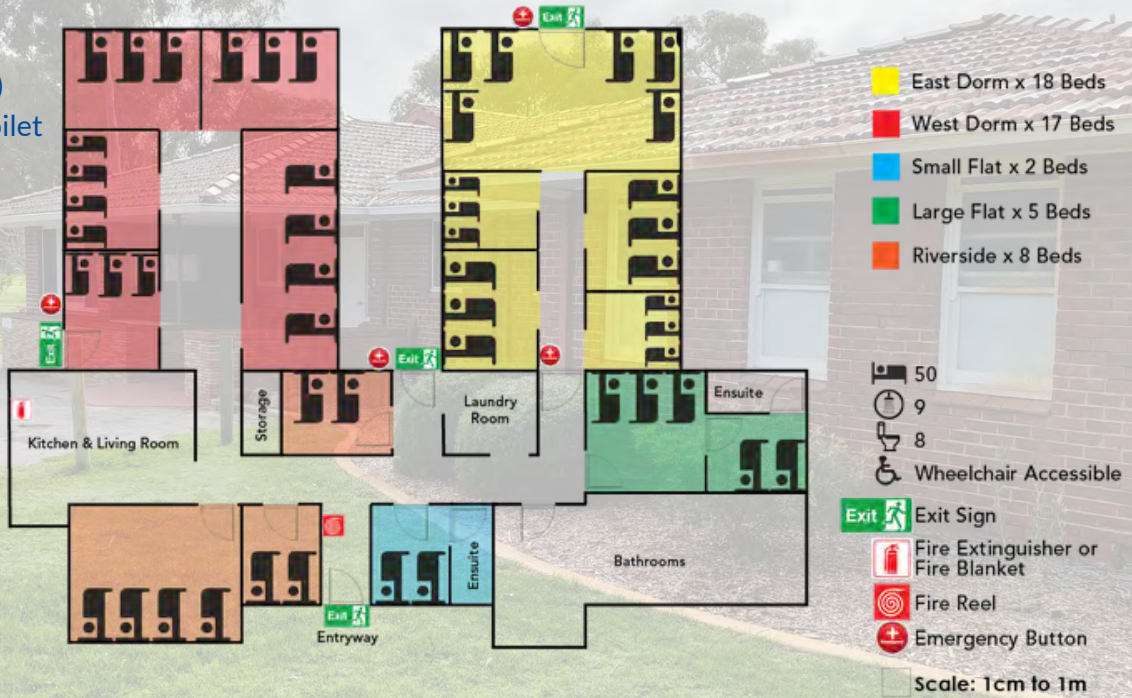
1 ensuite room



## WATTLE CAMP HOUSE

50 beds

- 1 bathroom (7 showers, 6 toilets)
- 1 universal access toilet and shower
- 2 ensuite rooms

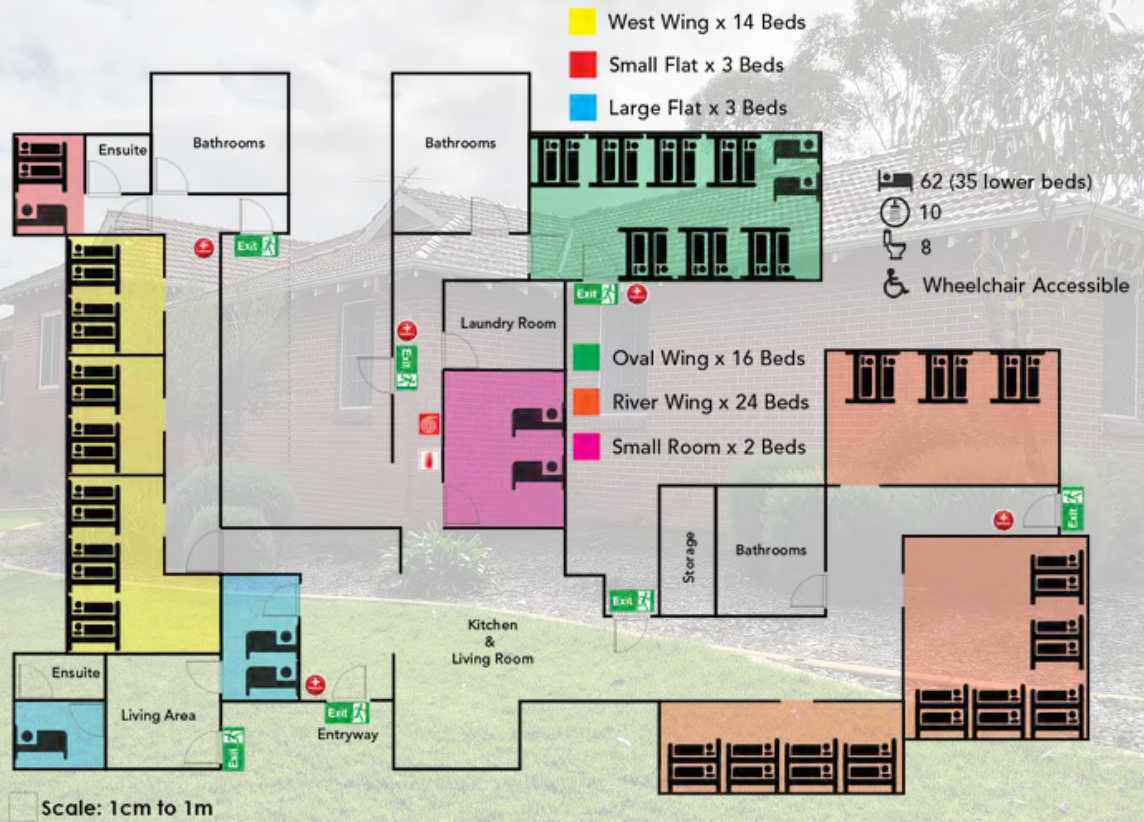


ACCOMMODATION

## MYRTLE CAMP HOUSE

62 beds  
(35 lower beds)

- 3 bathrooms (8 showers, 6 toilets)
- 1 universal access toilet and shower
- 2 ensuite rooms



# TAILOR YOUR FUNCTION ROOM!

Swan Valley Adventure Centre has superior facilities aimed at assisting any organisation to achieve its specific **conference, event and function** objective.

From **large open conference rooms** ideal for lectures to **smaller meeting rooms** to intimate breakout rooms for workshops, our wide range of facilities offers the perfect spaces for your organisation to achieve its goals. In addition to the broad range of sizes, we work with you to tailor a layout to best suit your needs.

AUDITORIUM



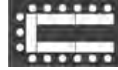
BANQUET



CLASSROOM



U-SHAPE



BOARDROOM



Every function room booking includes Free **WiFi, cabled internet\***, **whiteboards, lecterns, projector screen** and access to our **printer (charges may apply)**.

*\*In selected rooms.*

*Audiovisual Equipment will incur the following additional fees: Data Projector + PA System = From \$100;*

*Microphone = \$5/day. For other AV equipment, pricing will be provided upon request.*

*Flipcharts = \$40/day.*





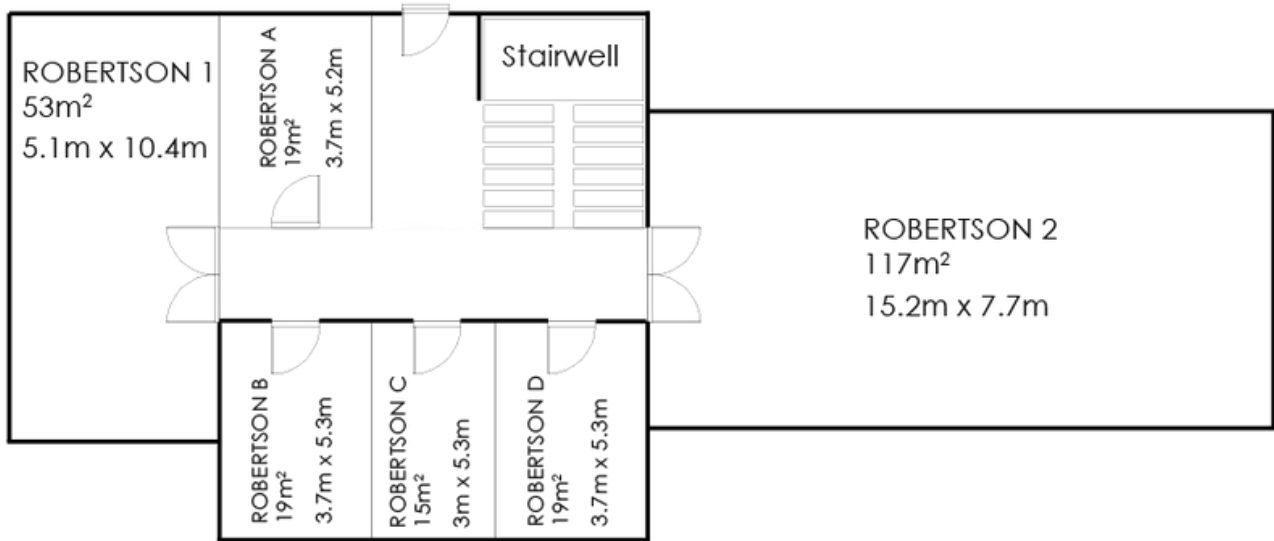
## ROBERTSON

Level 1 (no universal access)

ROOM 1 - up to 55 pax.

ROOM 2 - up to 120 pax.

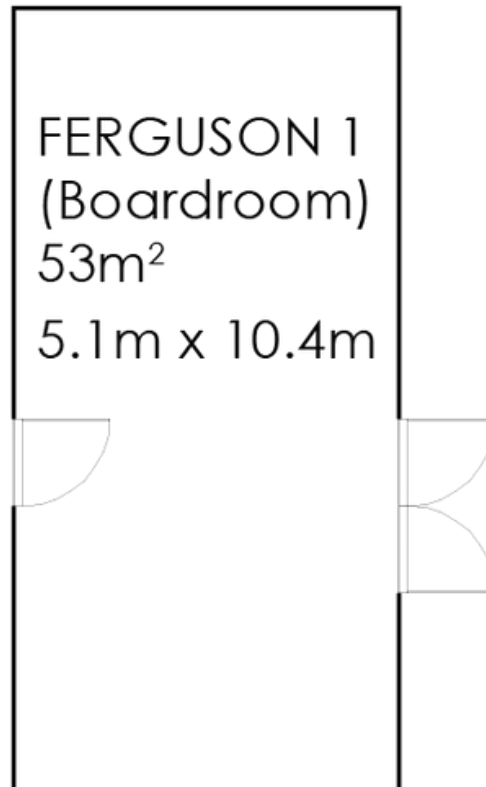
ROOMS A, B, C, D - up to 12 pax.



FUNCTION ROOMS

## FERGUSON

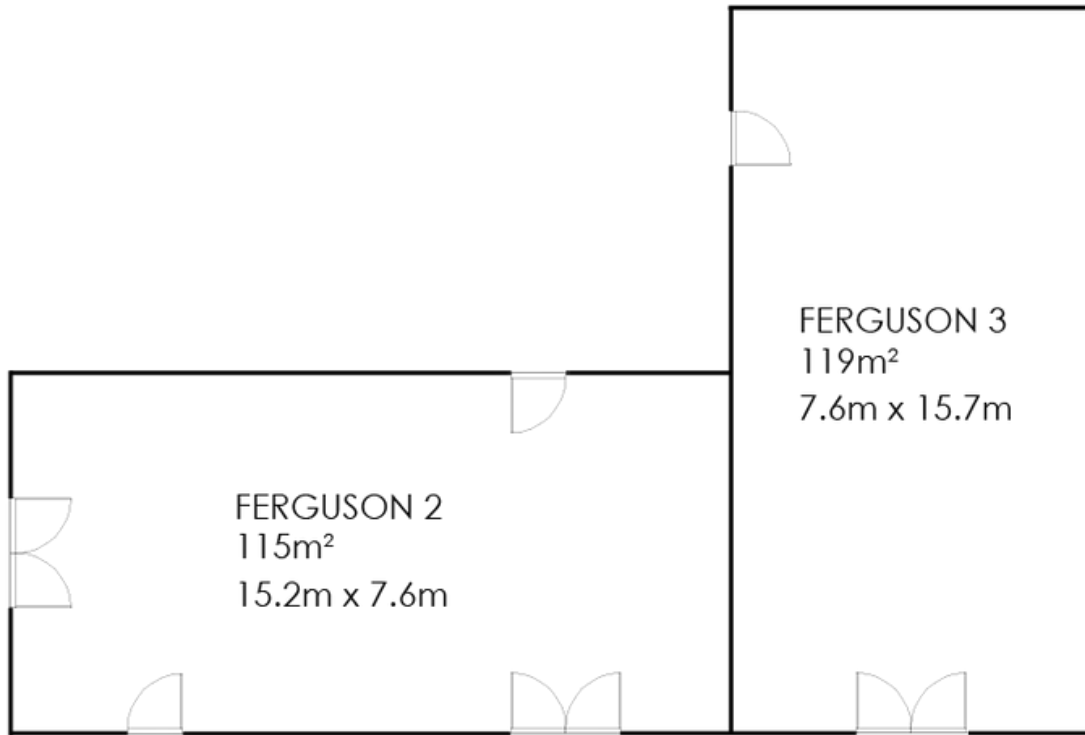
BOARDROOM - up to 20 pax.



## FERGUSON

ROOM 2 - up to 140 pax.

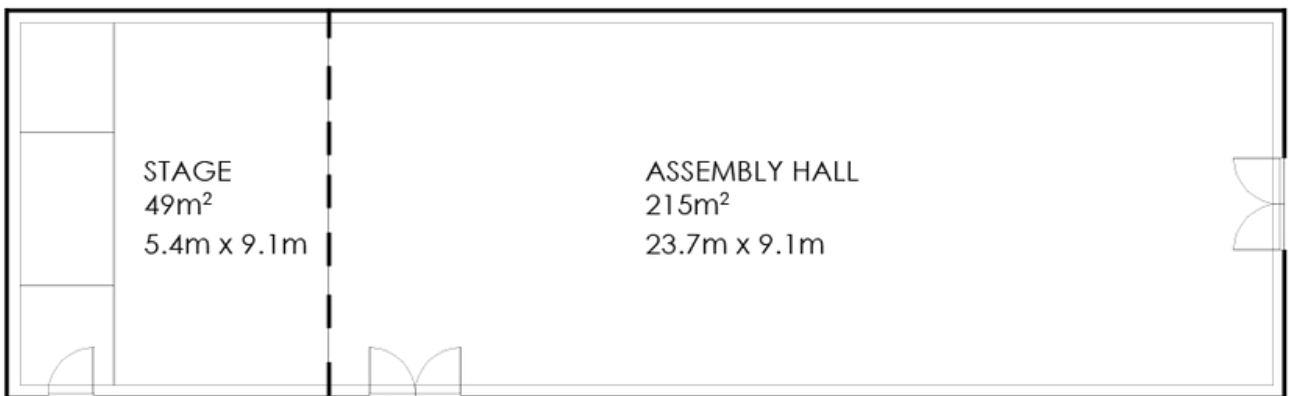
ROOM 3 - up to 150 pax.



FUNCTION ROOMS

## ASSEMBLY HALL

Up to 300 pax.



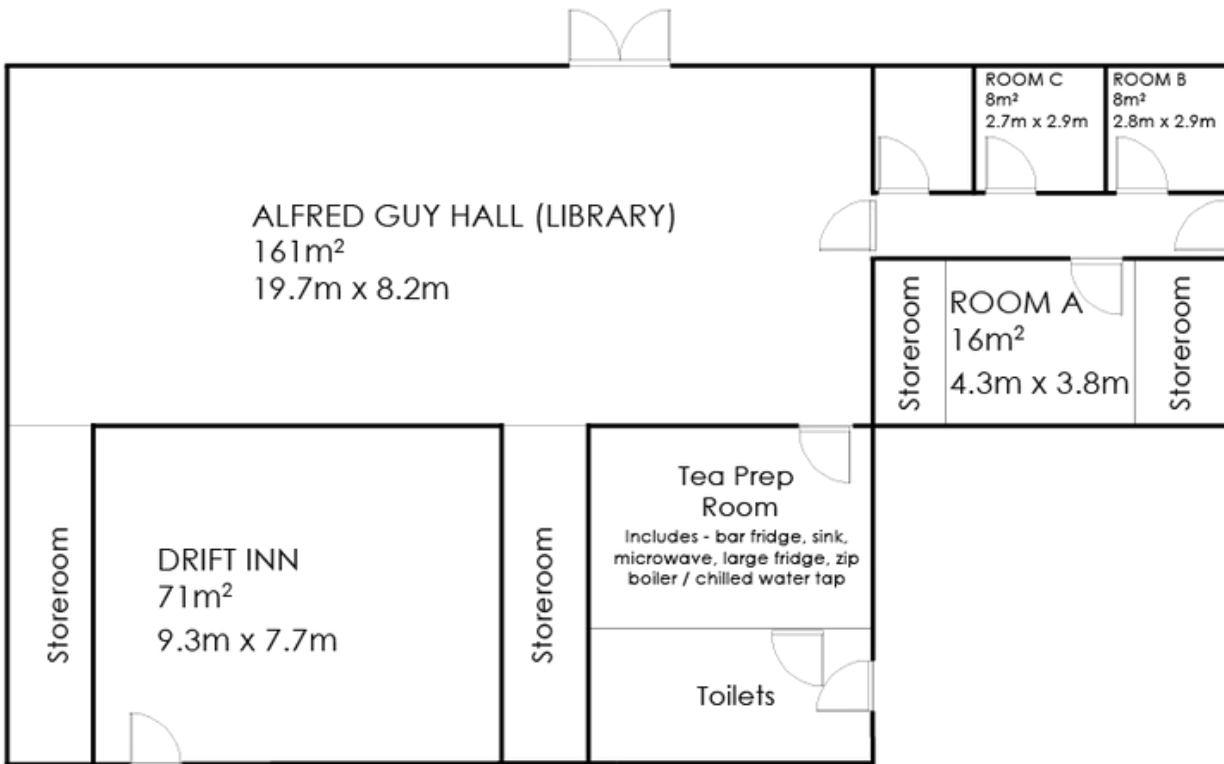
# ALFRED GUY

HALL - up to 250 pax.

ROOM A - up to 10 pax.

DRIFT INN - up to 30 pax.

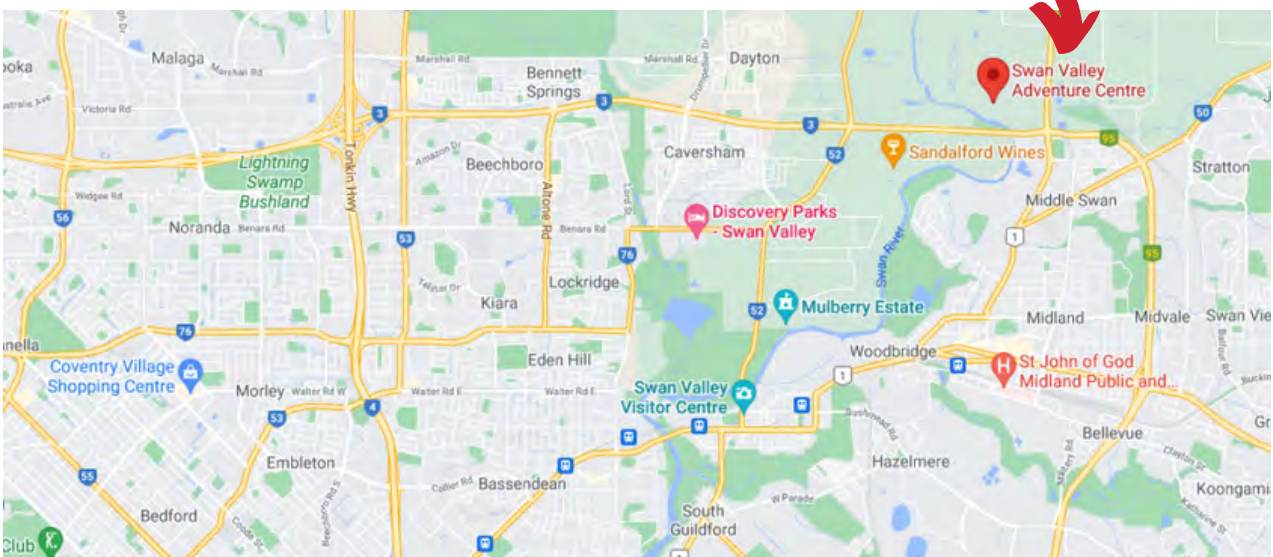
Tea Prep Room



FUNCTION ROOMS

## WHEN WILL YOUR NEXT INSPIRING EXPERIENCE BE?

We are just off the Reid Highway, 30 minutes from Perth CBD





SWAN VALLEY  
**ADVENTURE CENTRE**  
*Creating Inspiring Experiences*

58 Yule Avenue, Middle Swan, 6056 WA

[www.swanvalleyadventurecentre.org](http://www.swanvalleyadventurecentre.org)

[info@swanvalleyadventurecentre.org](mailto:info@swanvalleyadventurecentre.org)

(08)9374 5600

