



SWAN VALLEY
ADVENTURE CENTRE
Creating Inspiring Experiences

TEAMBUILDING ADVENTURES - ACTIVITY
PACKAGES - CATERING - FUNCTION ROOMS

Nestled in the beautiful Swan Valley, the **Swan Valley Adventure Centre** has been **creating inspiring experiences** for adventurers since 2016. With a core desire to create a **safe place of growth and enjoyment** for all individuals, our team share and promote the same values: honesty, integrity and respect. A short **30 minutes drive from Perth CBD**, our unique picturesque site provides guests with a multitude of options for **outdoor adventures, school camps, corporate conferences, team building activities, nature retreats** and much more.

With the ability to customize and personalize adventure packages to suit **every age, activity level and physical ability**. Our passionate skilled instructors lead **land, air and water activities** providing countless opportunities to try exciting experiences, conquer fears and learn new skills.

Our venue can accommodate over **250 guests** in charming camp houses and our exceptional Chefs can cater to a wide variety of menu options that **suit every taste and requirement**.

We boast an amazing 89 acres of tranquil open spaces and historic buildings with one mission: create **unforgettable moments** that will be talked about for years to come.

We look forward to welcoming you!



DESIGN YOUR TEAM ADVENTURE!

Splash into the Swan River with your canoe; test your team's management of fear with the high ropes course or improve their communication skills over problem-solving activities.

It's your team, your adventure, you design it! At the Swan Valley Adventure Centre, you will get access to a wide range of **fun outdoor activities for all abilities**, lead by our skilled instructors.

Our adventure programs are extremely flexible and can be tailored around your activity choices or desired outcomes: **leadership, teamwork, communication**, or simply creating a **bonding experience** during a **staff reward day**. We can host groups from 10 to 200 participants.

Whether you choose our air, land or water activities, you will create your team's most memorable experience!

LAND - Take on a team-building challenge with one of our 15 problem-solving activities.

AIR - Develop complete trust towards each other with one of our many high-flying activities.

WATER - With exclusive private access to the Swan River, we are proud to host a variety of water activities. You can also enjoy our swimming pool to cool off after an adventure day.



**Bookings required. All Prices are Inclusive of GST. Pricing applies from Monday to Saturday. Sunday Activities incur a 35% surcharge. Each Activity is 1.5 hours long. Rates and Price Variations: rates quoted are appropriate to the product at the time of quoting and these rates may change subject to supply chain variations. Please refer to our website for our Terms & Conditions.*



HIGH ROPES COURSE

\$40 pp

Our state-of-the-art high ropes course is set in a beautiful area of bushland near the Jane brook. A tree-top adventure to test your fears and conquer them. We use a continuous safe roller belay system for ensuring the safest possible experience.

ARCHERY

\$28 pp – All abilities

Become the Robin Hood of the Swan Valley with this popular sport that hones hand-to-eye coordination. Based in our undercover archery range, participants will be taught the skills they need to hit the bullseye. Patience and active listening will be required to be successful. Our sessions follow the strict guidelines set by Archery WA.

TEAM BUILDING

\$23 pp

Challenging problem-solving activities that require teamwork, leadership and communication skills. There is often more than one way to proceed, so teams need to use their initiative and quickly devise a decision-making process. Challenges are tailored to suit the needs and goals of each group.



TEAMBUILDING ADVENTURES

CANOEING

\$35 pp

All aboard! Why not discover the beautiful Swan River with one of our single-bladed paddles or three person canadian canoes. Expect to get wet so bring a full change of clothes and shoes.

LEAP OF FAITH

\$35 pp

One of our most challenging activities! You will climb a large telegraph pole, stand on top of it and take “the leap of faith” by jumping off to try and hit a large orange ball hanging in the air. Your group members have to keep the ropes tight as you leap off the pole. A great teambuilding activity to develop complete trust towards each other.

OTHER ACTIVITIES AVAILABLE

(price per person)

ABSEILING - \$35

ROCK-CLIMBING - \$35

POSSOM GLIDER - \$35

FLYING FOX - \$35

CRATE STACK - \$35

JACOB'S LADDER - \$35

KAYAKING - \$35

RAFT BUILDING - \$28

COMMANDO COURSE - \$28

ESCAPE ROOM - \$28

ORIENTEERING - \$23

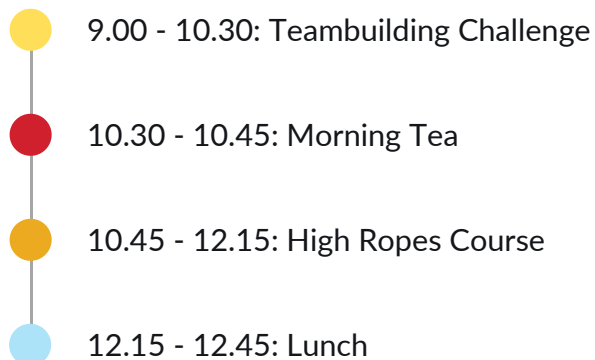
CATAPULT BUILDING - \$23

Multi Adventure Pack – Half Day

\$90 pp – Catering included

This program encourages teams to work together to complete a series of activities before tackling the highly challenging high ropes course.

Morning or afternoon sessions available.



High Adrenaline Pack – Half Day

\$90 pp – Catering included

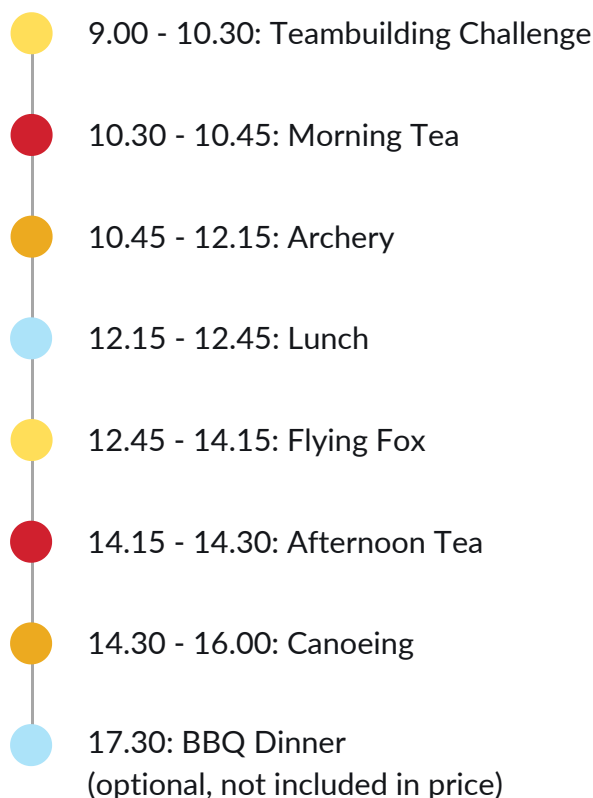
This high adrenalin pack gets your pulse racing as you tackle the ropes course high up in the tree canopy before testing your nerves on the leap of faith. Morning or afternoon sessions available.



Multi Adventure Pack – Full Day

\$160 pp – Catering included

This program allows you to experience 4 of the exciting adventure activities on offer*.



**Activities are just examples and we can substitute these for any activities we offer for your group.*

ENJOY OUR MENU OPTIONS, BON APPETIT!

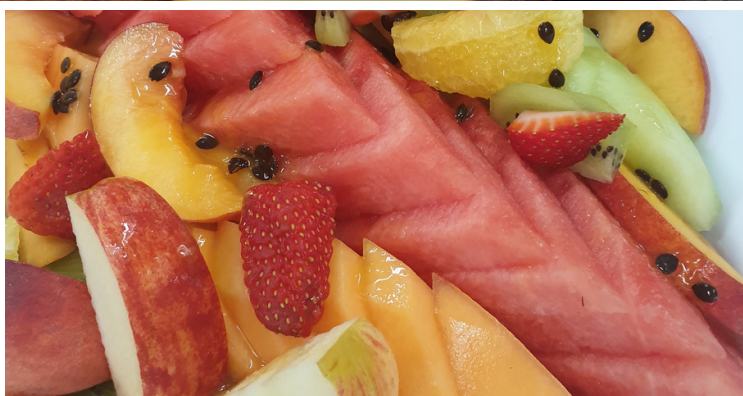
Enjoy the charm and style of the world-famous Swan Valley for your next event, we are sure to have a **catering package that meets your needs**. We specialize in catering for all groups and events, from **school camps and adventure groups to corporate clients**.

Our spacious facilities offer **unparalleled views of the unique Swan Valley**, including Swan River.

We offer **full kitchen services from breakfast through to dinner**, served in our **dining room**. If you prefer to take a break whilst working, we are even able to offer your guests the chance to **dine among the trees with picnic packages** available by request.

Please be aware that it is critical for anyone with an allergy to notify us a minimum of **one week prior to the event**. Fruits and vegetables are subject to seasonal availability.

For those with special dietary needs, speak with one of our friendly staff members to integrate additional options into your package.



CORPORATE MENU*

Morning & Afternoon Tea

SWEET SELECTION

Please select two of the following items, 1 piece of each served per person

Baked Portuguese tarts
Scones with thick cream and strawberry jam
Flourless chocolate cake, mascarpone and berry coulis (gf)
Orange and poppyseed flourless cake, double cream (gf)
Mixed mini Danish selection
Assorted freshly baked sweet mini muffins
Homemade selection of cookies
Selection of mini filled donuts
Yoghurt, muesli and berry coulis cups

Lunch

SANDWICHES

Please select two of the following fillings, serving size one sandwich, baguette or wrap per person

Triple smoked ham, onion jam, tasty cheese, wild rocket
Grilled Mediterranean vegetables, spinach, soft herb mayonnaise (v)
Continental – roast beef, pastrami,
Hungarian salami, cheese, salad, relish
Chicken, avocado, coz lettuce, dijonnaise
Roast beef, tomato, Spanish onion, cheese, horseradish cream
Curried egg and salad (v)

SAVOURY SELECTION

Please select two of the following items, 1 piece of each served per person

Chorizo and potato frittata, roasted cherry tomatoes, smoked paprika aioli (gf)
Asparagus, pumpkin and fetta frittata, romesco sauce (v, gf)
Black forest ham and Swiss cheese croissants
Tomato, Swiss cheese and basil pistou croissants (v)
Individual quiche Lorraine
Goat's cheese and caramelized onion tart (v)
Assorted freshly baked savoury muffins
Individual spinach and feta quiche (v)
Pumpkin, thyme & honey tart (v)

SALADS

Please select two of the following salads

Classic Caesar salad
Bang bang chicken salad, Asian herbs, Vietnamese coleslaw, crispy shallots, nam jim
Roasted pumpkin salad, spinach, beetroot, feta, peptitas, balsamic glaze (v, gf)
Roasted cauliflower and quinoa salad, rocket, currants, yoghurt dressing (v, gf)
Wild rocket, pear and parmesan salad (v, gf)
Brown rice salad, capsicum, Spanish onion, mint, coriander, parsley, red wine vinaigrette (v, gf)
Garden salad, cucumber, tomato, red onion, carrot, iceberg lettuce (v, gf)

**The corporate menu is included in your half and full-day activity packages.*



ADDITIONAL OPTIONS



Premium Selection - extra \$20/person

Select one dish in each section of the buffet: Main dishes - Side dishes - Desserts

MAIN DISHES

Panko crumbed barramundi, caper and parsley aioli
Miso marinated salmon, sweet soy glaze, pak choy
Southern fried chicken breast, honey mustard dipping sauce
Beef lasagne, shaved parmesan cheese
Spinach and ricotta cannelloni, tomato and basil sugo, shaved grana padano (v)
Roasted vegetable lasagne, Napoli sauce, parmesan cheese (v)
Butter chicken, lemon and garlic yoghurt (gf)
Lamb Rogan Josh, cumin scented yoghurt (gf)
Slow cooked shoulder of Gin Gin pork, sea salt crackling, gravy, apple compote (gf)
Grain mustard, garlic and rosemary roasted beef, bordelaise sauce (gf)

DESSERTS

Apple and rhubarb crumble with honey, and oats
Spanish churros, cinnamon sugar, chocolate sauce
New York baked cheesecake, raspberry coulis

Additional platters

Arancini platter - \$7/person

Chefs selection of arancini (2 per person), parmesan cheese, aioli

Australian platter - \$8/person

King Island beef party pies, mini sausage rolls, tomato sauce

Asian platter - \$6/person

A selection of vegetable spring rolls and samosas (1 of each per person), sweet chilli sauce

Vegetarian platter - \$9/person

Spinach and feta pastizzi, cauliflower cheddar and wasabi party pies (1 of each per person)

SIDE DISHES

Garlic and rosemary roasted royal blue potatoes (v, gf)
Steamed medley of seasonal vegetables, extra virgin olive oil, lemon (v, gf)
Baked cauliflower and broccoli, Dijon mustard and vintage cheddar cheese sauce (v)
Garden salad, mesclun, tomato, cucumber, Spanish onion, house dressing (v, gf)
Classic Caesar salad with croutons, crisp bacon, parmesan and egg
Steamed basmati rice, star anise, cinnamon (v, gf)
Mashed potatoes (v, gf)
Roasted pumpkin, honey and nutmeg (v, gf)

Lemon tartlets, mint sugar, double cream
Chocolate brownie, white chocolate mousse and praline
Mini Pavlovas, passionfruit and strawberries (gf)
Seasonal fruit salad, passionfruit and Chambord syrup, Chantilly cream (gf)

Antipasto platter - \$11/person

Continental meats, house-marinated olives, feta, Turkish bread, grissini, chorizo and marinated vegetables

Dips and Turkish bread platter - \$9/person

A selection of house-made dips and toasted Turkish bread

Fruit platter - \$4/person

A selection of fresh seasonal fruits

Cheese platter - \$12/person

A selection of local and imported cheeses, dried fruits, grapes, water crackers, quince paste

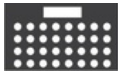


TAILOR YOUR FUNCTION ROOM!

Swan Valley Adventure Centre has superior facilities aimed at assisting any organisation to achieve its specific **conference, event and function** objective.

From **large open conference rooms** ideal for lectures to **smaller meeting rooms** to intimate breakout rooms for workshops, our wide range of facilities offers the perfect spaces for your organisation to achieve its goals. In addition to the broad range of sizes, we work with you to tailor a layout to best suit your needs.

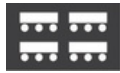
AUDITORIUM



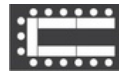
BANQUET



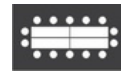
CLASSROOM



U-SHAPE



BOARDROOM

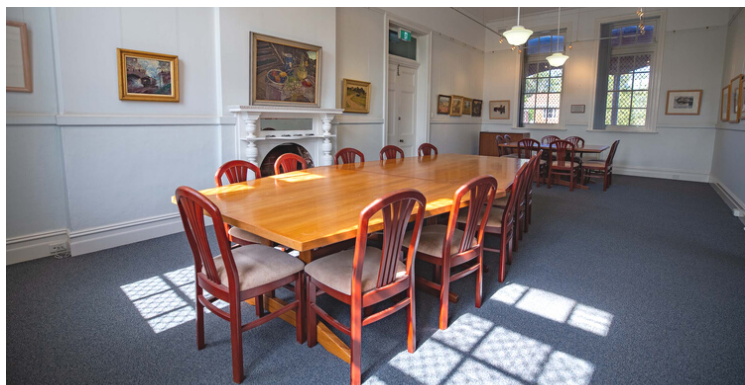


Every function room booking includes **Free WiFi, cabled internet***, **whiteboards, flipcharts, lecterns, projector screen** and access to our **printer**.

**In selected rooms.*

Audiovisual Equipment will incur the following additional fees: Data Projector + Mini Cube PA System = \$100; Microphone = \$5/day. For other AV equipment, pricing will be provided upon request.

FUNCTION ROOMS



ROBERTSON

Level 1 (no universal access)

ROOM 1 - up to 55 pax.

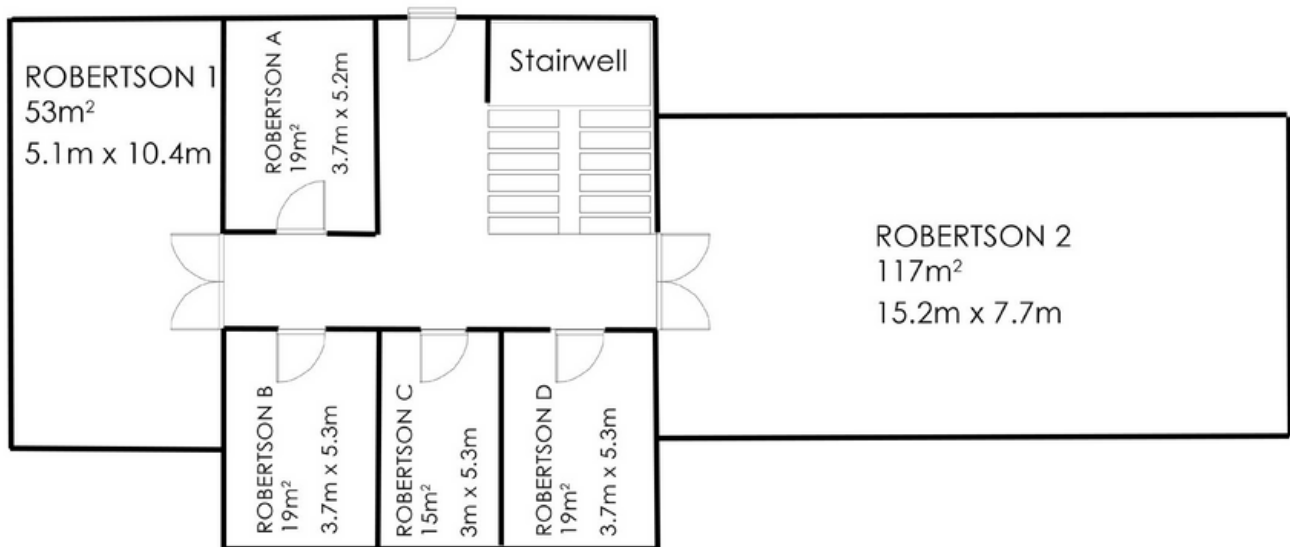
\$180 full day / \$90 half day

ROOM 2 - up to 120 pax.

\$300 full day / \$150 half day

ROOMS A, B, C, D - up to 12 pax.

\$50 full day / \$30 half day

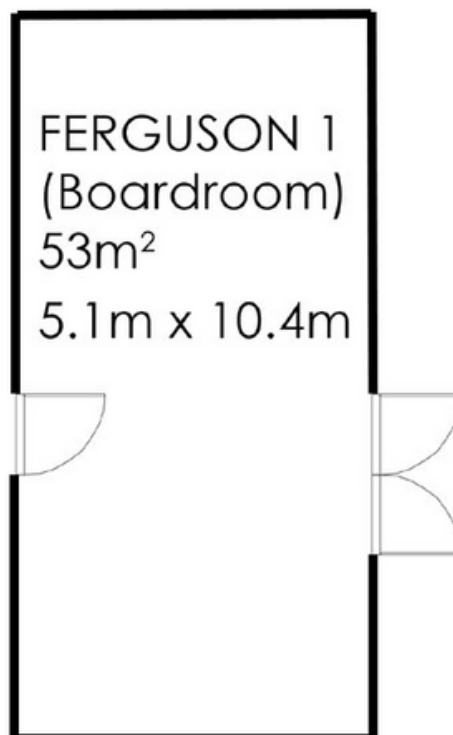


FUNCTION ROOMS

FERGUSON

BOARDROOM - up to 20 pax.

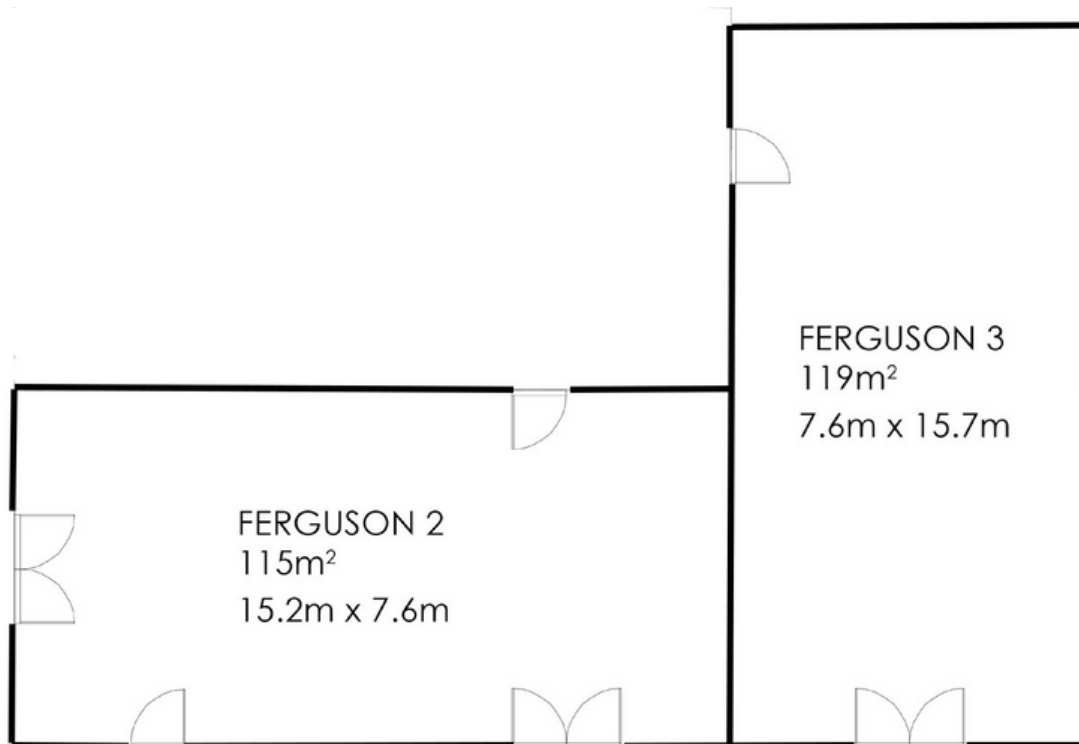
\$280 full day / \$140 half-day



FERGUSON

ROOM 2 - up to 140 pax.
\$300 full day / \$150 half day

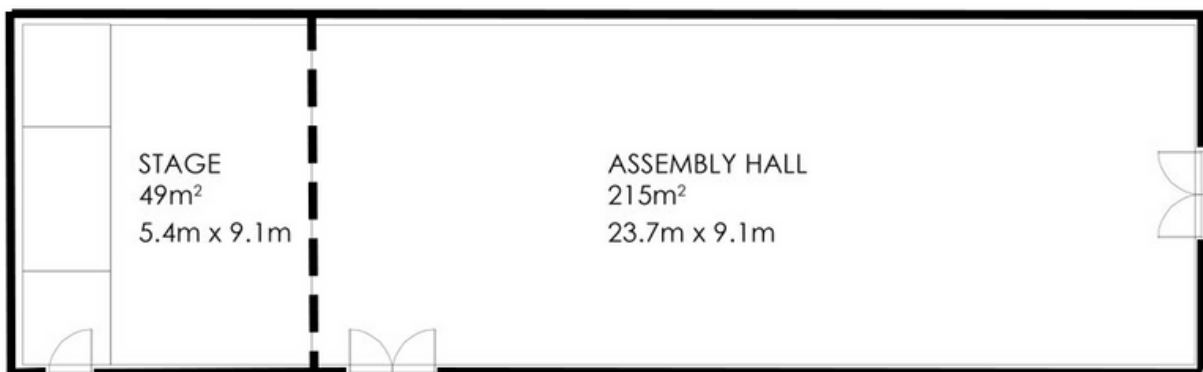
ROOM 3 - up to 150 pax.
\$300 full day / \$150 half day



FUNCTION ROOMS

ASSEMBLY HALL

Up to 300 pax.
\$300 full day / \$150 half day



ALFRED GUY

HALL - up to 250 pax.

ROOMS A, B, C, D - up to 10 pax.

DRIFT INN - up to 30 pax.

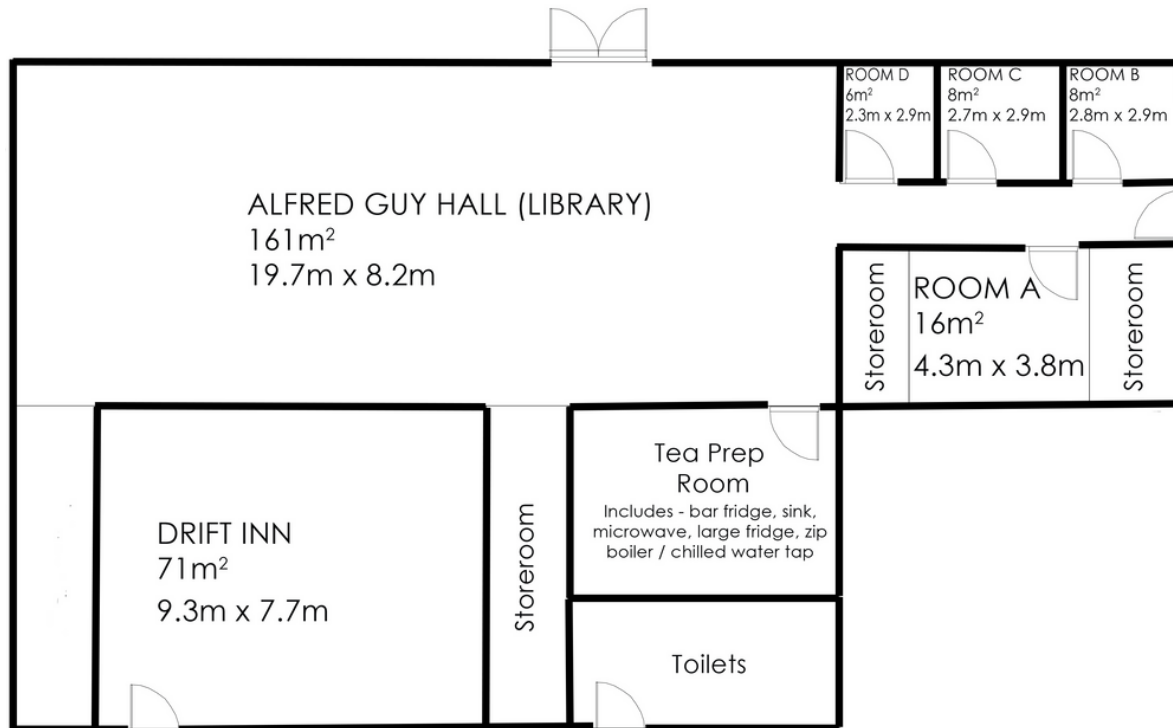
Tea Prep Room

\$400 full day / \$145 half day

\$50 full day / \$30 half day

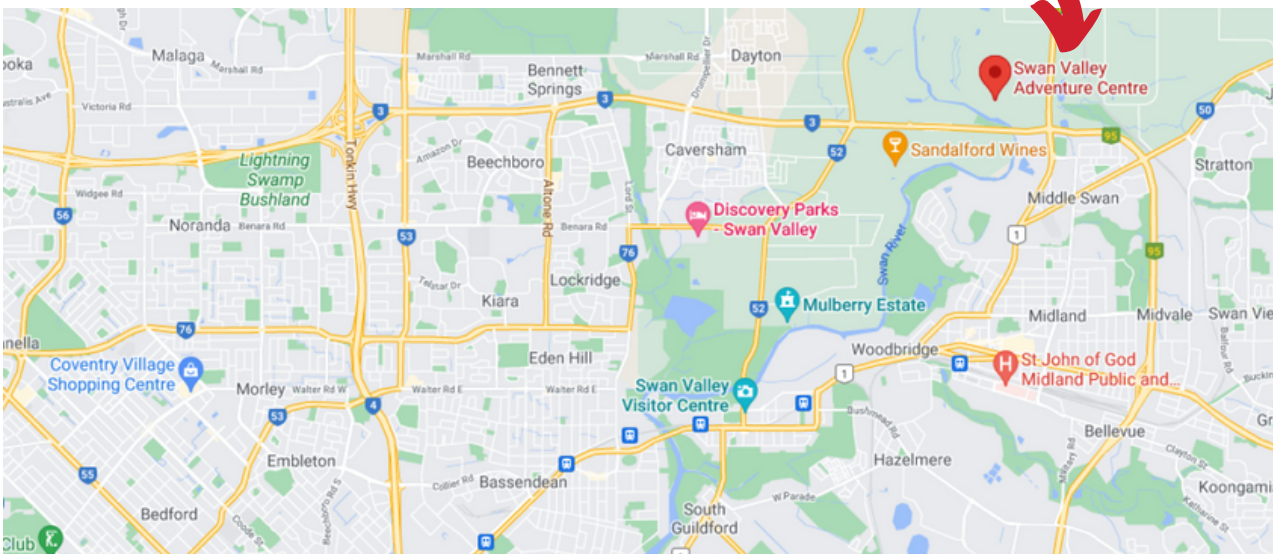
\$130 full day / \$90 half day

\$88 full day / \$44 half day



WHEN WILL YOUR NEXT INSPIRING EXPERIENCE BE?

We are just off the Reid Highway, 30 minutes from Perth CBD





SWAN VALLEY **ADVENTURE CENTRE**

Creating Inspiring Experiences

58 Yule Avenue, Middle Swan, 6056 WA

www.swanvalleyadventurecentre.org

info@swanvalleyadventurecentre.org

(08)9374 5600

